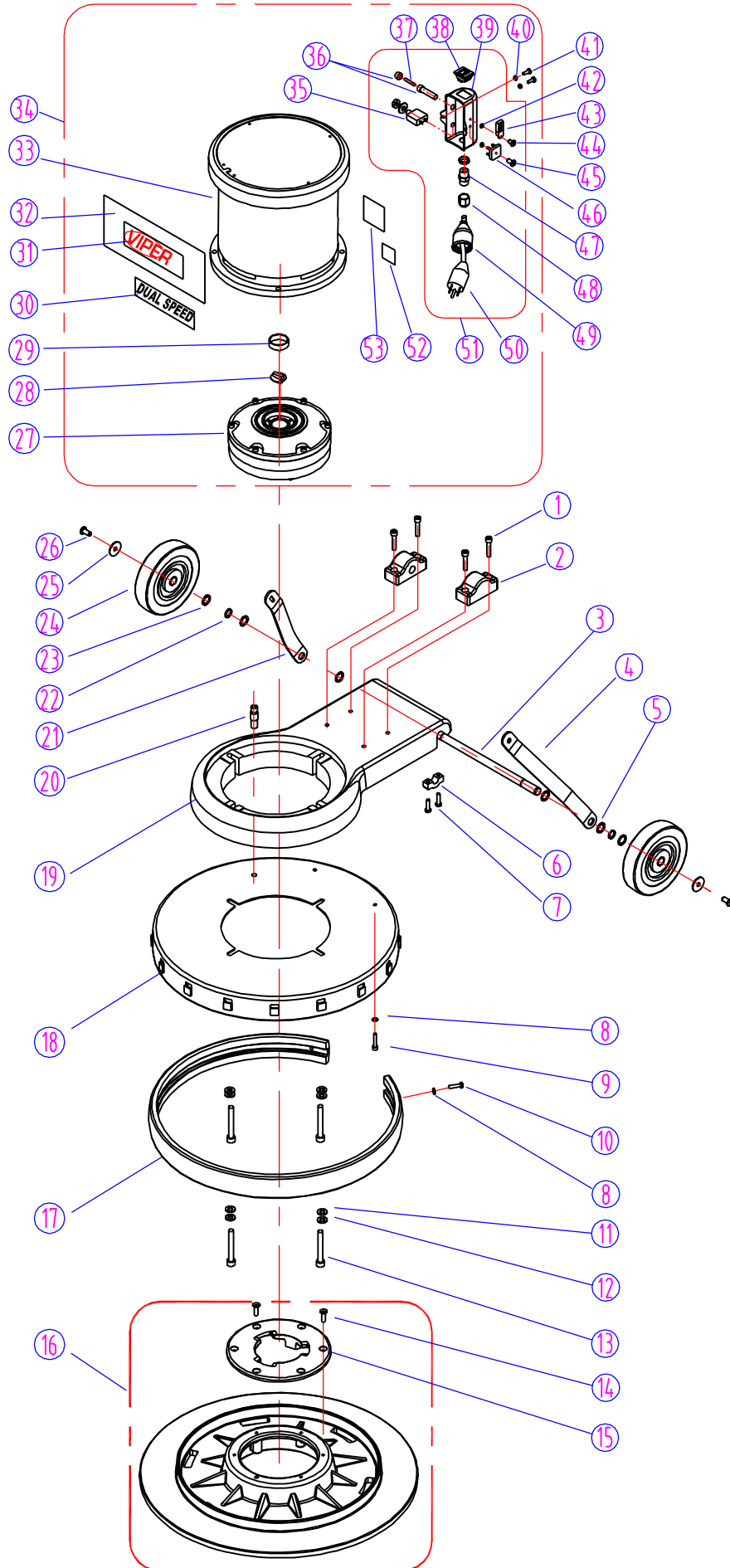


BASE GROUP FOR VN20DS



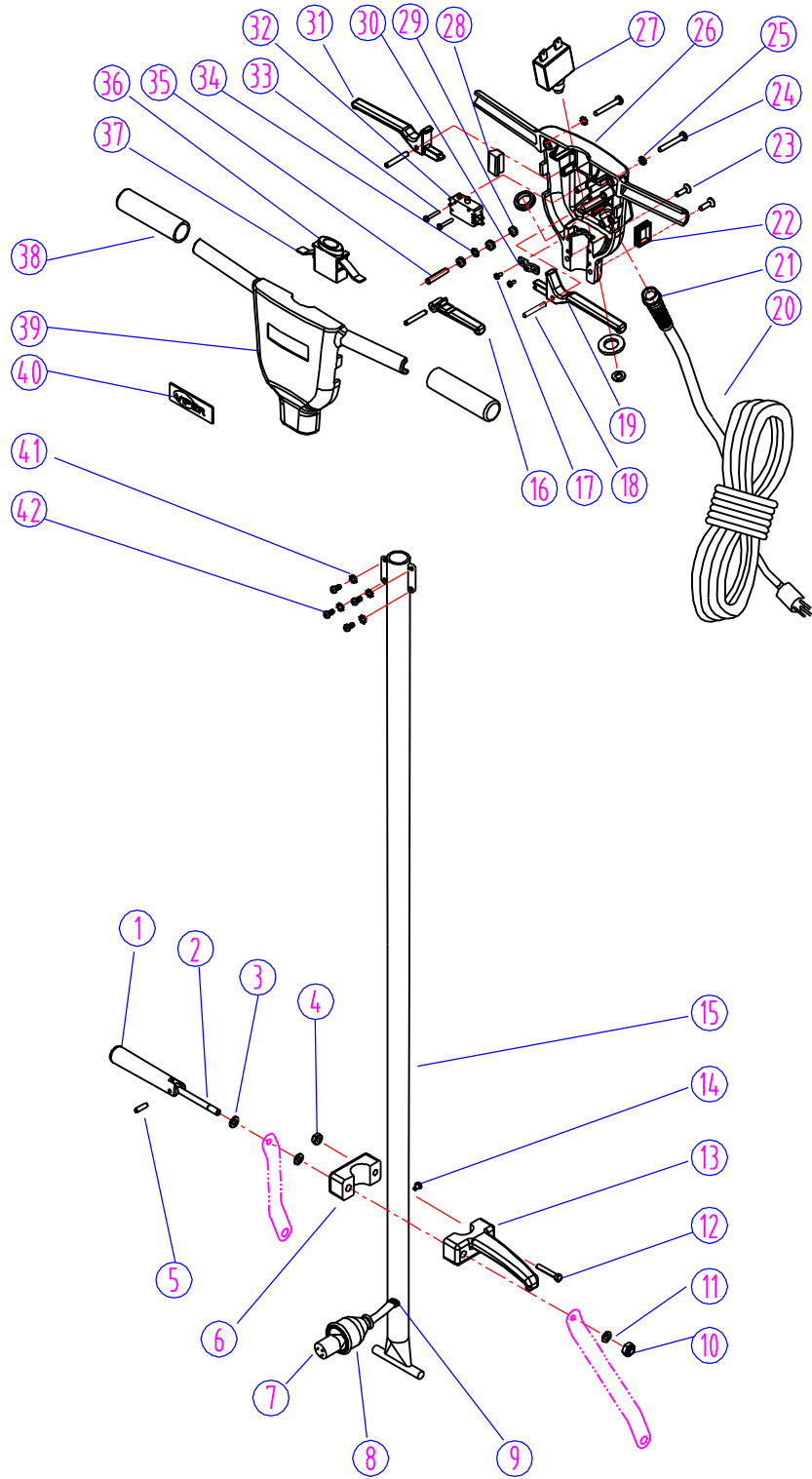
BASE ASSEMBLY - VN20DS

DIA NO	PART NUMBER	DESCRIPTION	NO REQ'D	LIST \$ (ea)
1	GT13080	SCREW, M6 X 30	4	\$0.63
2	VF30011	CLAMP BLOCK, HANDLE	1	\$7.13
3	VF30026	AXLE	1	\$9.63
4	VF30020	BRACKET, LEFT HANDLE	1	\$19.13
5	VV20274	WASHER, PLAIN, M13	4	\$2.13
6	GV40235	CLAMP BLOCK, AXLE	2	\$1.13
7	VV13621	SCREW, SELF-TAPPING, M5 X 20	4	\$0.63
8	VF13474A	WASHER, PLAIN, M5	4	\$0.63
9	VF13613	SCREW, M5 X 20	2	\$0.63
10	VA13474	SCREW, M5 X 16	5	\$0.63
11	VF13524	WASHER, PLAIN, M8	4	\$0.63
12	VF13519	WASHER, LOCK, M8	4	\$0.63
13	VF13618	SCREW, 5/16" X 2 1/4"	4	\$1.38
14	MF-VF002-4A	SCREW, SELF-TAPPING, 1/4"-1"	6	\$0.88
15	MF-VF002-2	CLUTCH PLATE	1	\$18.38
16	MF-VF022	PAD HOLDER, 19-INCH	1	\$87.50
17	VF30004	BUMPER, 20-INCH	1	\$10.00
18	VF30006	SHROUD, 20-INCH	1	\$62.50
19	VF30008	ALUMINUM BASE, MOTOR	1	\$62.50
20	VF40152	HOSE BARB	1	\$4.38
21	VF30019	BRACKET, HANDLE, RIGHT	1	\$19.13
22	VF13520	WASHER, LOCK	2	\$0.63
23	VF50119	WASHER, LOCK, M12	2	\$0.63
24	VF48202	WHEEL, 5"	2	\$20.00
25	VF13666	WASHER, M6	2	\$0.63
26	VF44012	SCREW, M6 X 12.7	2	\$0.75
27	VF999802B	GEAR BOX	1	\$322.50
28	VF99021	COULPING	1	\$9.00
29	MT01102	SLEEVE	1	\$2.25
30	VF40990	LABEL, DUAL SPEED	1	\$4.38
31	VF41079	LABEL, VIPER	1	\$11.88
32	ZD48310	LABEL, MOTOR	1	\$8.13
33	ZD48000	MOTOR, DUAL SPEED, 1.5 HP	1	\$575.00
34		SEE #27 & #33		
35	ZD48320	CIRCUIT BREAKER, 30A	1	\$12.13
36	ZD48321	FUSE CARTRIDGE	1	\$7.88
37	ZD48322	FUSE	1	\$5.00
38	VA91347	SWITCH ASSEMBLY	1	\$8.38
39	ZD48309	SHELL	1	\$12.38
40	VF13604	WASHER, TOOTH, M5	2	\$0.63
41	VF14214	SCREW, M5 X 8	2	\$0.63
42	GT13014	NUT, NYLON INSERT, M4	2	\$0.63
43	ZD48316	TRIAC	1	\$19.63
	ZD48317	DIODE	1	\$6.88
	ZD48318	CAPACITOR, 2G, 223J (0.022uF/400V)	1	\$7.13
	ZD48323	RESISTOR, 270K, 1/4 W	1	\$5.50
44	GT13048	SCREW, M4 X 12	1	\$1.13
45	VA13473	SCREW, M4 X 16	1	\$0.88

46	VF99926-1	RECTIFIER	1	\$23.12
47	VV67405	CORD STRAIN RELIEF	1	\$4.75
48	VV67405-1A	NUT	1	\$0.88
49	AS41902	PLUG PROTECTOR, LARGE FEMALE	1	\$5.63
50	VF999794	CORD, MOTOR	1	\$8.88
51	ZD48330	KIT, SPEED ADJUSTMENT	1	\$102.50
52	VF40994	LABEL, READ MANUAL	1	\$0.63
53	VF40997	SERIAL TAG	1	\$0.88

PARTS LIST

HANDLE GROUP FOR VN20DS



HANDLE ASSEMBLY - VN20DS

DIA NO	PART NUMBER	DESCRIPTION	NO REQ'D	LIST \$ (ea)
1	VF30016	HANDLE RELEASE	1	\$24.38
2	VF30015	BOLT, HANDLE RELEASE	1	\$9.63
3	VF30018	WASHER, PLAIN	2	\$1.13
4	VF13503	NUT, LOCK, M8 X 5.7	1	\$0.63
5	VF30017	SCREW	1	\$1.38
6	VF30014	COVER, HOOK	1	\$9.88
7	VF45120	CORD, HANDLE	1	\$5.63
8	AS41901	PLUG PROTECTOR, SMALL MALE	1	\$5.63
9	VF50120	GROMMET	1	\$0.63
10	VF13504	NUT, LOCK, M10	1	\$0.63
11	VF13517	WASHER, PLAIN	1	\$0.63
12	VF14114	SCREW, M8 X 55	1	\$1.75
13	VF30013	HOOK, CORD	1	\$19.63
14	VF13493	SCREW, M6 X 10	1	\$0.63
15	AS112205	TUBE	1	\$33.75
16	VF44018	LEVER, SOLUTION	1	\$10.63
17	VV13661	SCREW, M4 X 12	2	\$0.63
18	VF48306	PIN	3	\$1.38
19	VF44016	TRIGGER, LEFT, SWITCH	1	\$10.63
20	VF45119	CORD, POWER SUPPLY	1	\$65.00
21	AS22009	CORD STRAIN RELIEF	1	\$11.88
22	VF30108	GASKET, HANDLE, SOLUTION	1	\$1.63
23	VF14223	SCREW, M6 X 25	2	\$0.63
24	VF14218	SCREW, M6 X 45	2	\$0.63
25	VF13528	TOOTH WASHER, M6	2	\$0.63
26	VF30102	REAR COVER, SWITCH HOUSING	1	\$64.63
27	VF99012	CIRCUIT BREAKER, 12A / 1.5HP	1	\$11.25
28	VF30109	COVER	1	\$1.63
29	GT13013	NUT, M4	3	\$0.63
30	VF48309	CLAMP, BLOCK	1	\$2.38
31	VF44017	TRIGGER, RIGHT, SWITCH	1	\$10.63
32	VF99023	SWITCH ASSEMBLY	1	\$9.88
33	VF14212	SCREW, M3 X 25	2	\$0.63
34	VF13527	TOOTH WASHER, M4	1	\$0.63
35	VF13526	SCREW, M4 X 30	1	\$0.63
36	VF46705	SAFETY BUTTON	1	\$4.63
37	GV40218	SPRING, SAFETY BUTTON	1	\$1.38
38	VF48310	HANDLE GRIP	2	\$9.88
39	VF30101	FRONT COVER, SWITCH HOUSING	1	\$60.88
40	VF47035A	LOGO	1	\$5.00
41	VF13604	TOOTH WASHER, M5	4	\$0.63
42	VF14222	SCREW, M5 X 12	4	\$0.63

HANDLE ASSEMBLY - VN20DS

DIA NO	PART NUMBER	DESCRIPTION	NO REQ'D	LIST \$ (ea)
1	VF30016	HANDLE RELEASE	1	\$24.38
2	VF30015	BOLT, HANDLE RELEASE	1	\$9.63
3	VF30018	WASHER, PLAIN	2	\$1.13
4	VF13503	NUT, LOCK, M8 X 5.7	1	\$0.63
5	VF30017	SCREW	1	\$1.38
6	VF30014	COVER, HOOK	1	\$9.88
7	VF45120	CORD, HANDLE	1	\$5.63
8	AS41901	PLUG PROTECTOR, SMALL MALE	1	\$5.63
9	VF50120	GROMMET	1	\$0.63
10	VF13504	NUT, LOCK, M10	1	\$0.63
11	VF13517	WASHER, PLAIN	1	\$0.63
12	VF14114	SCREW, M8 X 55	1	\$1.75
13	VF30013	HOOK, CORD	1	\$19.63
14	VF13493	SCREW, M6 X 10	1	\$0.63
15	AS112205	TUBE	1	\$33.75
16	VF44018	LEVER, SOLUTION	1	\$10.63
17	VV13661	SCREW, M4 X 12	2	\$0.63
18	VF48306	PIN	3	\$1.38
19	VF44016	TRIGGER, LEFT, SWITCH	1	\$10.63
20	VF45119	CORD, POWER SUPPLY	1	\$65.00
21	AS22009	CORD STRAIN RELIEF	1	\$11.88
22	VF30108	GASKET, HANDLE, SOLUTION	1	\$1.63
23	VF14223	SCREW, M6 X 25	2	\$0.63
24	VF14218	SCREW, M6 X 45	2	\$0.63
25	VF13528	TOOTH WASHER, M6	2	\$0.63
26	VF30102	REAR COVER, SWITCH HOUSING	1	\$64.63
27	VF99012	CIRCUIT BREAKER, 12A / 1.5HP	1	\$11.25
28	VF30109	COVER	1	\$1.63
29	GT13013	NUT, M4	3	\$0.63
30	VF48309	CLAMP, BLOCK	1	\$2.38
31	VF44017	TRIGGER, RIGHT, SWITCH	1	\$10.63
32	VF99023	SWITCH ASSEMBLY	1	\$9.88
33	VF14212	SCREW, M3 X 25	2	\$0.63
34	VF13527	TOOTH WASHER, M4	1	\$0.63
35	VF13526	SCREW, M4 X 30	1	\$0.63
36	VF46705	SAFETY BUTTON	1	\$4.63
37	GV40218	SPRING, SAFETY BUTTON	1	\$1.38
38	VF48310	HANDLE GRIP	2	\$9.88
39	VF30101	FRONT COVER, SWITCH HOUSING	1	\$60.88
40	VF47035A	LOGO	1	\$5.00
41	VF13604	TOOTH WASHER, M5	4	\$0.63
42	VF14222	SCREW, M5 X 12	4	\$0.63