

TORNADO® INDUSTRIES CORP.
7401 W. LAWRENCE AVENUE
CHICAGO, IL 60706
(708) 867-5100 FAX (708) 867-6968
www.tornadovac.com



Illustrated Parts List Manual

For Commercial Use Only



Wide Area Vacuum Cleaner

CATALOG NOS.

93030

For Operations/Maintenance See L3030DF

Specifications

CATALOG NO.	93030
SERIES	F
CLEANING PATH (WIDTH)	30"
HP – BRUSH MOTOR	½ HP
HP – VAC MOTOR	2 X 1 HP
VOLTS	115V
AMPS	15
CERTIFICATION	N/A

TABLE OF CONTENTS (L3030 MANUAL)

<u>DESCRIPTION</u>	<u>PAGE(S)</u>
Full Assembly Exploded View	4
Full Assembly Parts List	7
Brush Assembly.....	9
Handle Assembly Exploded View	10
Handle Assembly Parts List	11
Wiring Diagram.....	12

PERFORMANCE FEATURES:

- Advanced Styling With Durable Construction
- Clean Air Filtration
- 30" Wide Cleaning Path
- Height-Adjustable Folding Handle
- 4-Row Chevron Brush (28" Long x 3" Diameter)
- PMDC Brush Motor, ½ HP, 2.3 Amps, 2600 RPM
- (2) Ametek Vacuum Motors:
 - 1 HP, 6.7 Amps, 98 CFM, 63" Waterlift
- 4 Stage "Clean Air" Filtration:
 - Stage 1: Disposable Paper Bag
 - Stage 2: High Efficiency Reusable Cloth Bag
 - Stage 3: Vacuum Motor Intake Filter
 - Stage 4: Motor Exhaust Filter Cartridge
- Rotationally Molded Housing and Lid
- 10" Diameter, 125 Lb. Rated Main Wheels
- 5 Foot-operated Brush Height Adjustment Levels
- Easy Access Poly-V Drive Belt
- Stainless Steel Brush Shoe
- 75 Foot Power Cord

Long-term buyer protection warranties

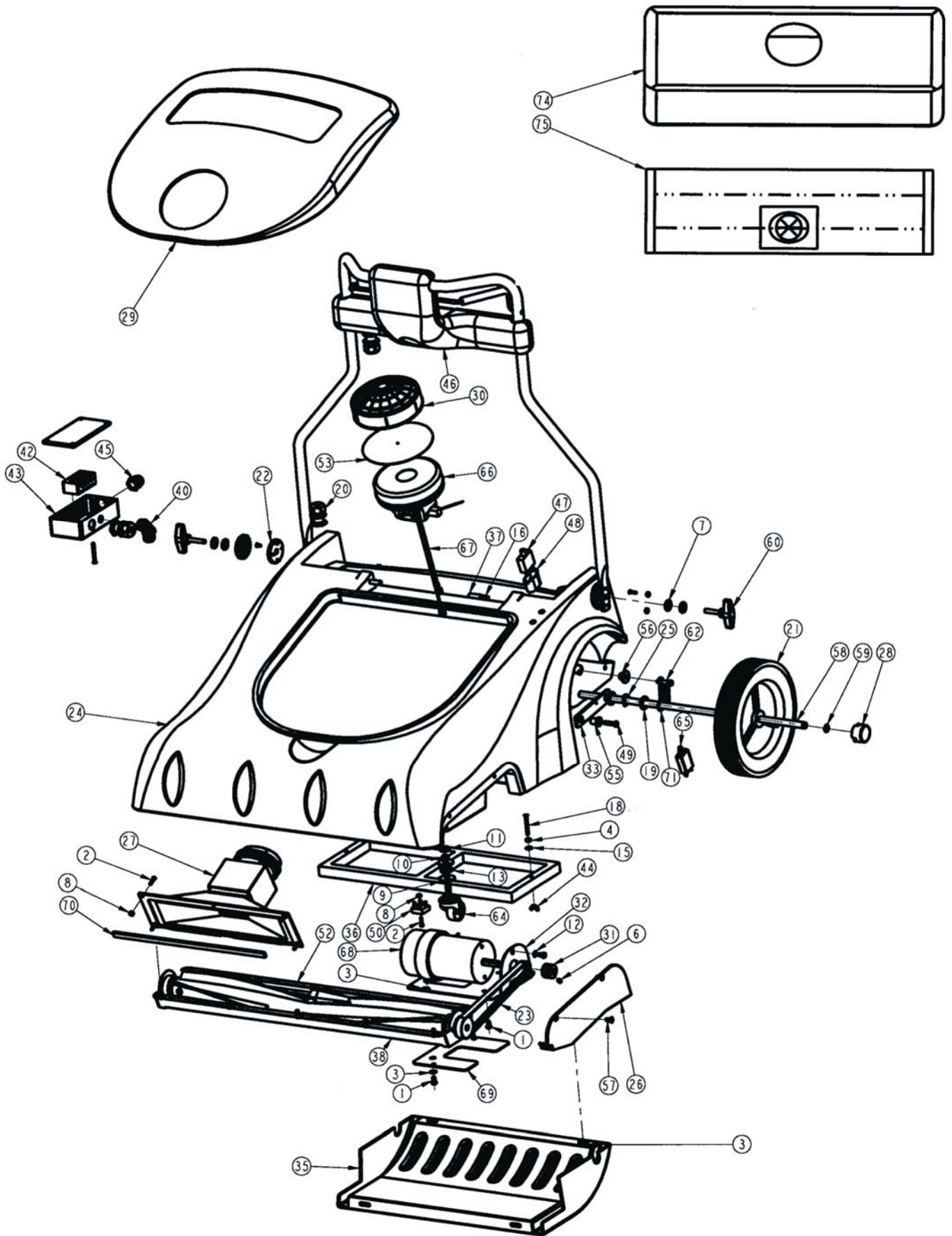
Tornado® Standard Warranty Program*	
<p>Warranties do not cover components subject to normal wear or abuse and misuse, and have other limitations not specified here. For full details, contact your Authorized Tornado Distributor, Service Center, or the Tornado Technical Service Department.</p> <p>Tornado sales and service representatives are not authorized to waive or alter the terms of this warranty, or to increase the obligations of Tornado under the warranty.</p>	<p>10 Years: <i>All plastic tanks and rotationally-molded bodies^{1) 2)}</i></p>
	<p>2 Year: <i>Parts on all Tornado and Tornado/Karcher cleaning equipment^{1) 2) 3)}</i></p>
	<p>1 Year: <i>Labor on all Tornado and Tornado/Karcher cleaning equipment²⁾</i></p>
	<p>1 Year: <i>Warranty on batteries and chargers, one year pro-rated.</i> ** 6 Month Warranty on Gel Batteries <i>All battery warranties are handled by the battery manufacturer, please call customer service for more information.</i></p>

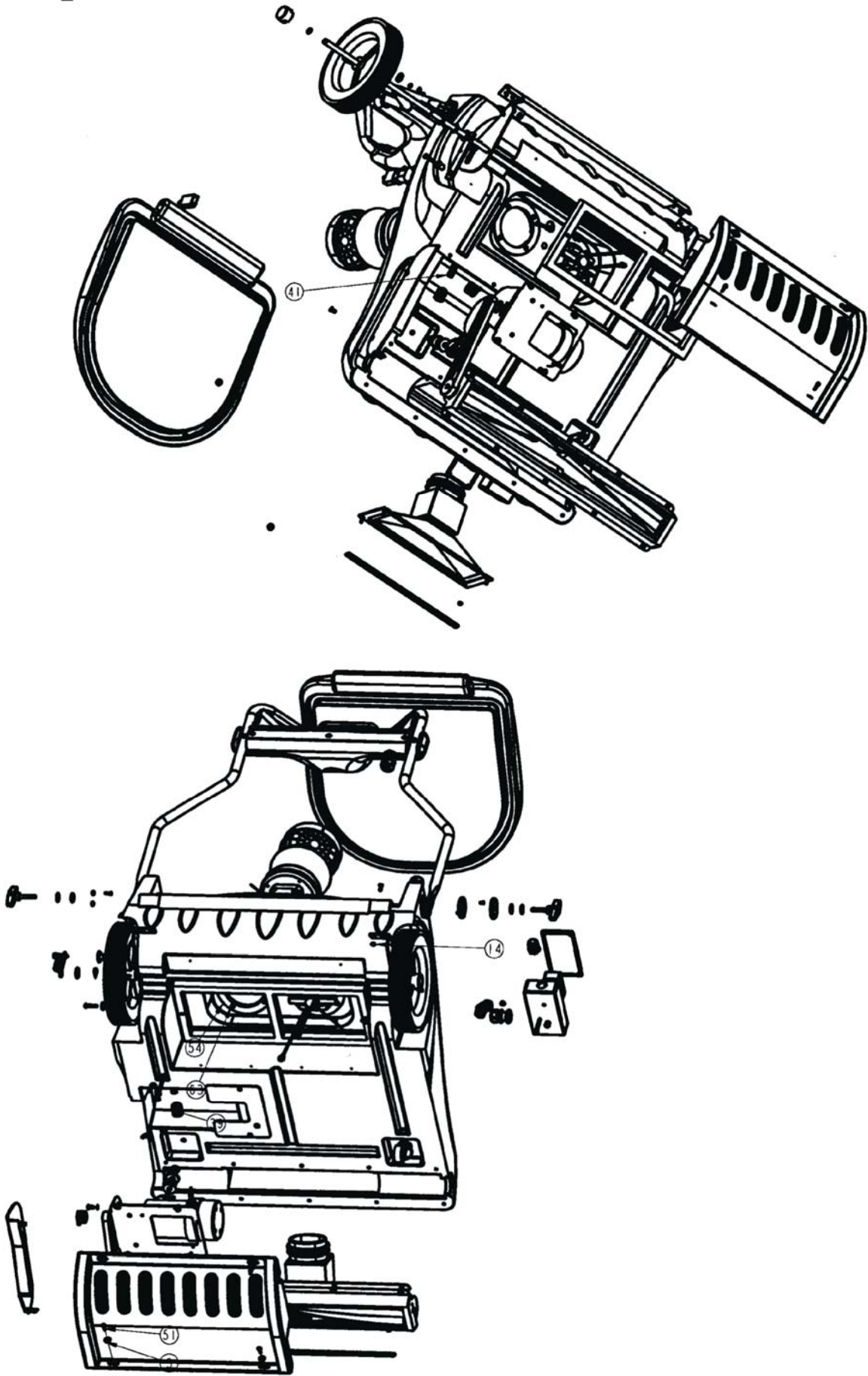
Thank you for choosing Tornado products. We are proud to offer the most complete line of commercial and industrial cleaning equipment in the industry. Our reputation for quality, innovation and durability is unsurpassed.

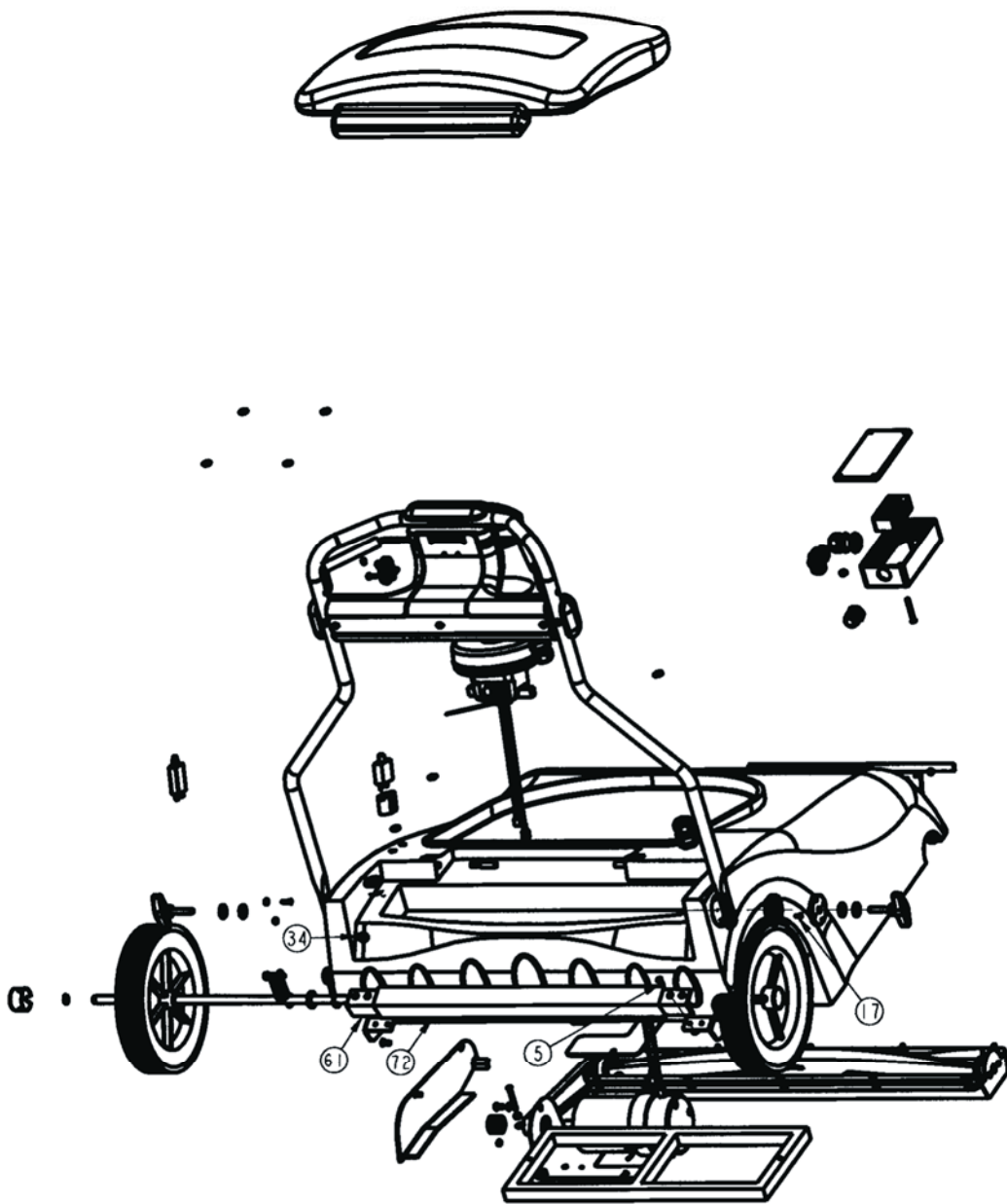
Effective January 1st, 2005. Terms subject to change without notice.
 Windshear™ Blower-Dryer, Insulation Blowers, T191, T201, T12/1, CV 30, CV 38, CW 50, CW 100, Pro PAC Vacs, Duo-Upright Carpetkeepers™, Gas & Electric Pressure Washers, and all chargers are warranted for 1 (one) year for both parts and labor.
 Warranties on all riding sweepers including the ICC1, KM 100/100 R, KMR 1250, and KMR 1700 are 24 months parts/6 months labor OR 1000 hours of operation, whichever comes first. Warranties on the 75/140 & 90/140 are 24 months parts/12 months' labor OR 1,000 hours of operation whichever comes first.
 All non-wear item parts purchased after warranty expiration are warranted for 90 days.
 Warranty starts from the date of sale to the consumer or, at Tornado's discretion, 6 months after dealer purchased the unit from Tornado, whichever comes first.

Note: Tornado, The Latest Dirt, Floorkeeper, Carpetkeeper, Carpetrinser, Carpetrinser/Dryer, Headmaster, Taskforce, PAC-VAC, T-Lite, Glazer, Windshear, Max-Vac, CV 30, CV 38, and Trot-Mop are trademarks of Tornado Industries.

1-800-VACUUMS
 Chicago area: (708) 867-5100
 Fax: (708) 867-6968
 7401 W. Lawrence Avenue
 Chicago, IL 60706







FULL ASSEMBLY PARTS LIST

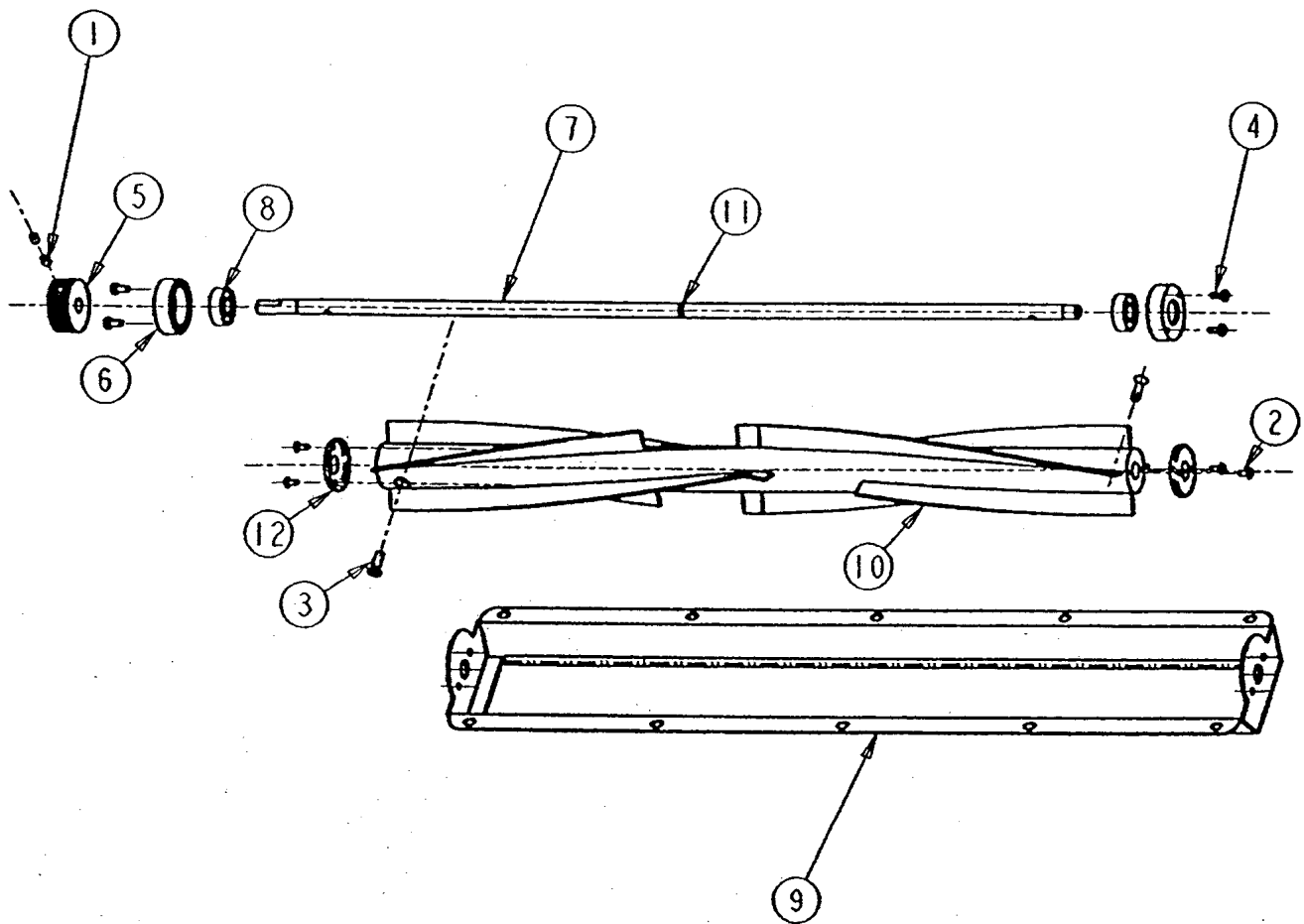
<u>ITEM</u>	<u>QTY</u>	<u>PART #</u>	<u>DESCRIPTION</u>
1	16	00086	SCREW - PHILLIPS ROUND HEAD MACHINE 1/4-20 X 1/2
2	5	00600	SCREW - SLOTTED ROUND HEAD MACHINE #8-32 X 3/4
3	4	00851	WASHER - PLAIN 1/4
4	4	01604	NUT – FINISHED HEX
5	4	01993	SCREW - PHILLIPS FLAT HEAD MACHINE #10-24 X 3/4
6	1	02011	SET SCREW, BRUSH PULLEY
7	4	02568	WASHER - PLAIN 5/16
8	5	02956	NUT – HEX. LOCK (KEPS) *8-32
9	4	03321	WASHER - PLAIN .391
10	2	03536	WASHER - LOCK 3/8"
11	2	05025	NUT – HEX. LOCK JAM
12	2	07870	WASHER - LOCK (I/T) 1/4"
13	2	10373	WASHER - PLAIN .500
14	4	10894	NUT – HEX. LOCK (P/T)
15	2	11385	WASHER SEALING
16	2	15357	SPRING - LATCH RELEASE
17	8	15475	SCREW – PHILLIPS FLAT HEAD MACHINE #8-32 X 3/8
18	4	16433	SCREW – PHILLIPS FLAT HEAD MACHINE #10-32 X 1-3/4
19	4	16581	WASHER – PLAIN 1/2"
20	4	18793	STRAIN RELIEF (LIQ.TITE)
21	2	19797	WHEEL 10" PLASTIC HUB 125 LB
22	2	19798	BRACKET GROOVED HANDLE
23	1	19802	BELT, BRUSH DRIVE-POLY
24	1	19814	CHASSIS, MAIN - ROTO MOLDED
25	2	19818	SPRING, 1/2 CURVED (VEND)
26	1	19819	COVER, BELT ROTO-MOLDED
27	1	19822	INTAKE DUCT
28	2	19831	HUB CAP, WHEEL WAV
29	1	19832	LID, MOLDED (WAV)
30	2	19834	FILTER VAC. MTR. INTAKE
31	1	19835	PULLEY, BRUSH DRIVE MOTOR
32	1	19836	MOUNT, BRUSH MOTOR (STEEL)
33	2	19841	ARM , WHEEL PIVOT - 3/16 X 1
34	1	19850	SWITCH, ON/OFF
35	1	19854	COVER EXHAUST .13" NOM. THK
36	1	19855	FILTER, WAV EXHAUST
37	2	19864	PIN, LID HINGE STEEL .340"
38	1	19870	ASS'Y – BRUSH
39	1	19875	FITTING STRAIGHT (BLK PLSTC)
40	1	19876	FITTING, ELBOW (FOR CABLE)
41	1	19878	CONDUIT - CABLE 10" LG.
42	1	19879	BLOCK TERMINAL
43	2	19880	BOX - ELECTRICAL
44	2	19975	NUT - WING (10-32) ZINC PL
45	1	19977	STRAIN RELIEF (PLACTIC)
46	1	19984	ASS'Y HANDLE
47	1	19990	CIRCUIT BREAKER

FULL ASSEMBLY PARTS LIST - CONTINUED

48	1	19991	BOOT, RUBBER – ELECTRICAL CONNECT
49	2	19999	SCREW - PHILLIPS ROUND HEAD MACHINE 1/4-20 X 1-1/8
50	1	24185	RECTIFIER 60 AMP
51	4	30018	SCREW - THUMB W/ SHOULDER #10-32 X 1/2"
52	1	30077	GASKET - SHOE (POLY FOAM)
53	2	30088	FILTER - PRE
54	2	30089	GASKET - MOTOR (POLY FOAM)
55	2	30461	SLEEVE PIVOT .5"(.25"ID)
56	2	30464	SLEEVE PIVOT (LRG).312"ID
57	2	30467	SCREW - PHIL. FLAT HD MACH
58	1	30491	ASS'Y AXLE WHEEL
59	2	30507	SNAP RING 1/2" EXTERNAL
60	2	30558	KNOB - HANDLE ADJ.(BLACK)
61	1	30595	PEDAL - FOOT ADJ. (STEEL)
62	2	30617	SCREW - SOCKET HD SHOULDER 5/16 DIA. X 1-1/2"
63	8	30620	SCREW – PHILLIPS PAN HEAD TAPTITE #10-16 X 3/4
64	1	31209	WHEEL, CASTER
65	1	31236	CIRCUIT BREAKER, 3 AMPS
66	2	31540	MOTOR – VACUUM (120V)
67	4	31544	LEAD WIRE – 9" (BLACK)
68	1	32419	MOTOR – BRUSH 115VDC
69	1	32456	PLATE – MOTOR COVER (WAV)
70	1	80605	GASKET MAT'L – NEOPRENE
71	2	30466	SPRING TENSION
72	1	30596	COVER PEDAL
73	1	19473	CORD - POWER (115V) 14/3 75' (MALE PLUG) YELLOW
74	1	19816	BAG, CLOTH
75	4	90701	BAG – PAPER, DISPOS – 10 PACK
(76)	1	18706	WIRE TIES 15" BLACK
(77)	1	30008	DECAL, WIRING
(78)	1	30017	WIRING HARNESS – MAIN BODY
(79)	1	30078	GASKET - HOOD 54" (L-200)
(80)	1	30442	DECAL REPLACEMENT PARTS
(81)	1	30618	DECAL – CARPET LEVEL
(82)	1	15245	TERMINAL – RING #10-16/14 GA (INS)

() ITEMS NOT SHOWN

* ITEM TO BE USED WHERE APPLICABLE

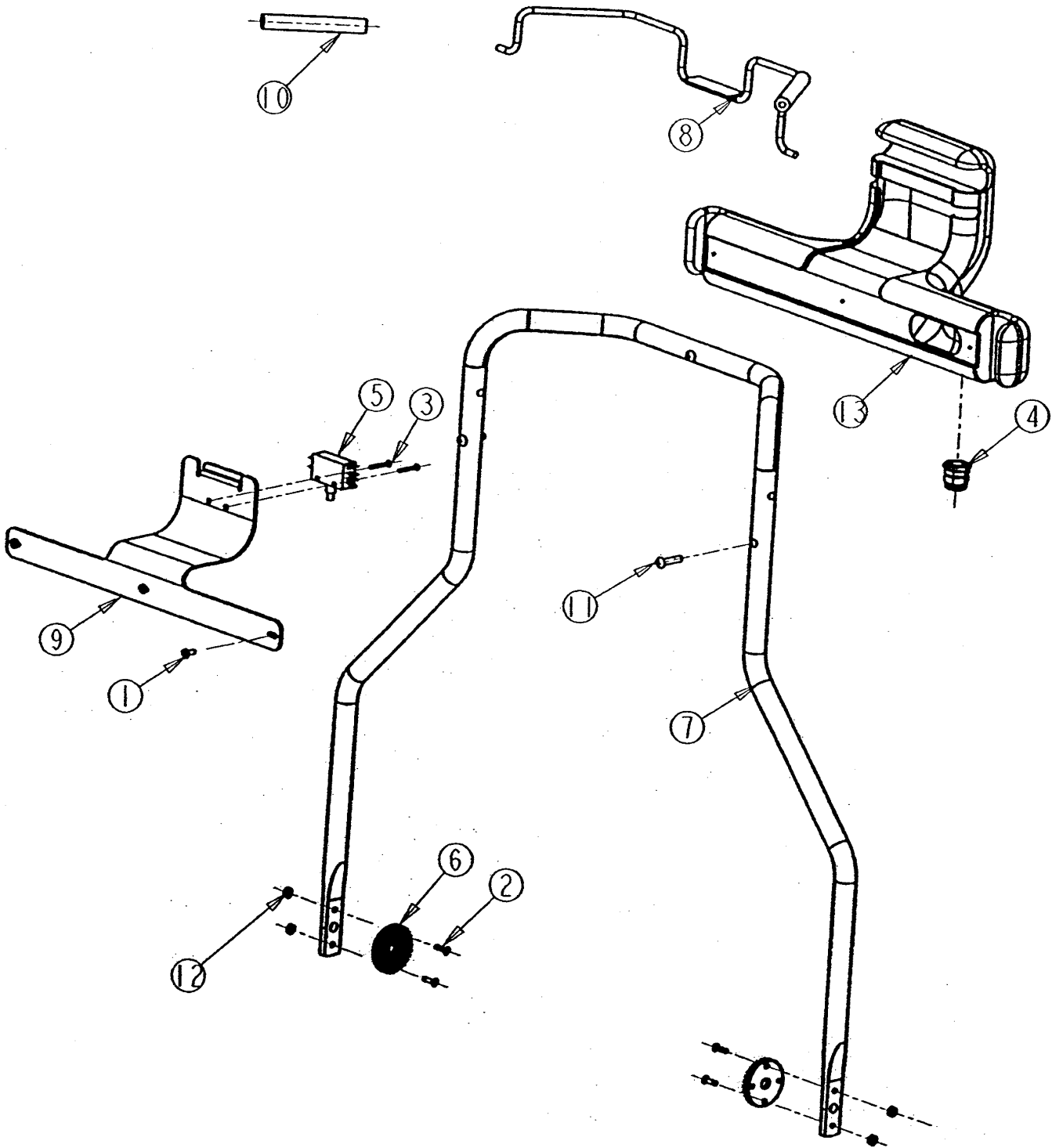


BRUSH ASSEMBLY PARTS LIST

(REF. DRAWING 19870)

<u>ITEM</u>	<u>QTY</u>	<u>PART #</u>	<u>DESCRIPTION</u>
1	2	02011	SET SCREW, BRUSH PULLEY
2	4	07535	SCREW #8-15 X .50 LG. (SHEET METAL)
3	2	11276	SCREW 1/4-20 X 7/8" LG. FLAT HEAD
4	4	16142	SCREW #10-32 X 1/2" LG. PAN HD (PHIL)
5	1	19804	BRUSH PULLEY
6	2	19805	BLOCK, BRUSH BEARING
7	1	19808	AXLE, WAV BRUSH
8	2	19809	BEARING, WAV BRUSH
9	1	19810	SHOE, WAV BRUSH MOUNT
10	1	19811	BRUSH 20" WAV
11	1	19838	"O" RING
12	2	19848	THREAD GUARD

HANDLE ASSEMBLY
(DRWG. P/N 30873)



HANDLE ASSEMBLY PARTS LIST

(REF. DRAWING 30873)

<u>ITEM</u>	<u>QTY</u>	<u>PART #</u>	<u>DESCRIPTION</u>
1	3	03660	#10-24 X 7/16" PAN HEAD SCREW
2	4	05769	#8-32 X 5/8" FLAT HEAD SCREW
3	2	06686	#6-32 X 3/4" PAN HEAD SCREW
4	1	18793	STRAIN RELIEF, CONTROL PANEL
5	1	19357	SWITCH, BRUSH
6	2	19798	BRACKET, HANDLE ADJUSTMENT
7	1	19829	HANDLE, MAIN STEEL TUBE
8	1	19849	TRIGGER, BRUSH SWITCH
9	1	19869	COVER, CONTROL PANEL
10	2	19971	FOAM GRIP TRIGGER
11	3	19999	1/4-20 X 1-1/8" ROUND HEAD SCREW
12	4	30074	HEX NUT LOCK
13	1	19813	CONTROL PANEL, WAV
(14)	1	19996	WIRE HARNESS

* ITEMS TO BE USED WHERE APPLICABLE

() ITEMS NOT SHOWN

WIRING DIAGRAM

Wide Area Vacuum
(Ref. Drawing #30008)

